

SonoScape

VET

**DELIVERING CLARITY
FOR EVERY STRIDE**

ProPet EQ



SonoScape

SonoScape Medical Corp.

2F, 12th Building, Shenzhen Software Park Phase II, Keji Middle 2nd Road,
Nanshan District, Shenzhen 518057, Guangdong, China
Tel: +86-755-26722890 Fax: +86-755-26722850
Email: market@sonoscape.net www.sonoscape.com

© 2020 SonoScape Medical Corp.
All rights are reserved.

SonoScape Medical reserves the right to change the above
information and discontinue any product at any time
without prior notification and will not be liable for any
consequences resulting from the use of this publication.

U-PEQ0250122

Introducing the ProPet EQ, the first portable ultrasound system powered by the groundbreaking C-Field+ platform, setting a new standard in equine diagnostic imaging. Designed specifically for horses, this advanced system delivers unmatched image clarity and ultra-fast signal processing, providing precise, real-time diagnostics you can rely on.

With unparalleled performance and adaptability, the ProPet EQ redefines veterinary diagnostics, embodying our commitment to Delivering Clarity for Every Stride.

Tailored and Expert Imaging Presets: Optimized for Equine Precision

The ProPet EQ Ultrasound is designed with a specialized focus on equine diagnostics, featuring a range of professional presets tailored for various clinical scenarios, including: MSK, ABD, Cardiac, Repro

Equine-Specific Veterinary Software for Advanced Care



Bodymark



Annotation



Measurement

REVOLUTIONIZING
EQUINE DIAGNOSTICS
WITH C-FIELD+
PRECISION

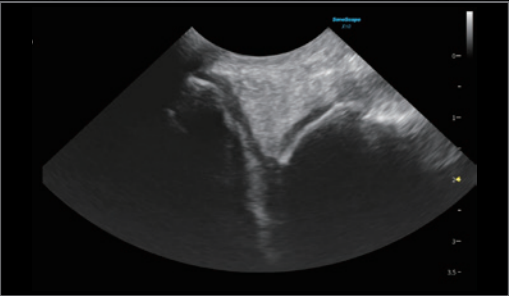
DEDICATED EQUINE APPLICATION

Optimized for equine applications, the ProPet EQ empowers veterinarians with cutting-edge imaging capabilities, ensuring exceptional care for every stride. Its intuitive interface, paired with advanced veterinary software and optimized workflows, makes it the ultimate tool for equine health assessments.



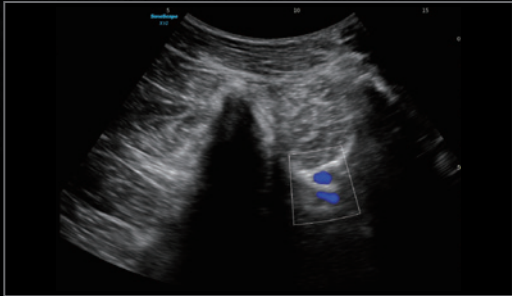
C613

The small convex probe is ideal for examinations that require a smaller field of view (FOV) and offer greater flexibility in angle. It is particularly useful for targeted scans, such as assessing injuries in the hoof socket area.



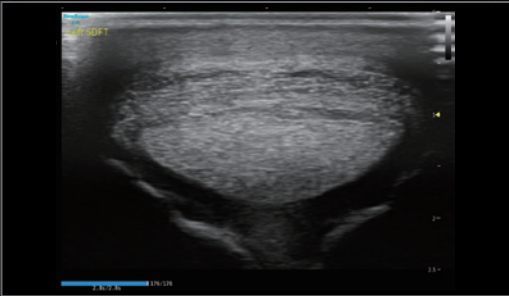
C1-6A

The single-crystal large convex probe retains high resolution while providing sufficient penetration, offering a wide-field imaging capability. It is particularly effective for abdominal scans in horses as well as musculoskeletal evaluations of the back.



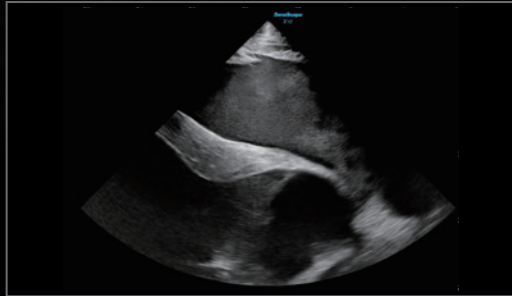
12L-B

The Ultra HD composite crystal linear probe combines high resolution and penetration power, making it ideal for small parts, and tendons. It is specifically used in linear array applications for horses, offering exceptional imaging for areas like tendons, ligaments, and other superficial tissues.



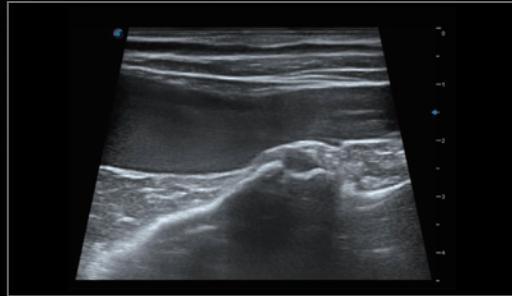
S1-5

The single-crystal low-frequency phased array probe is ideal for horse heart ultrasound, offering clear images to check the heart's structure, function, and blood flow.

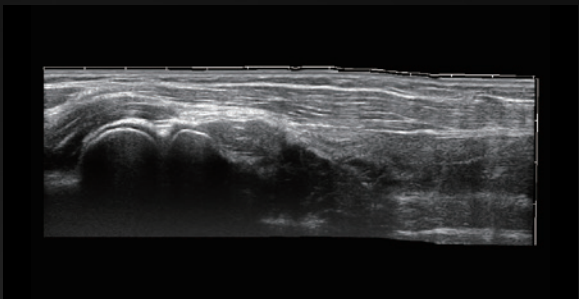


L741V

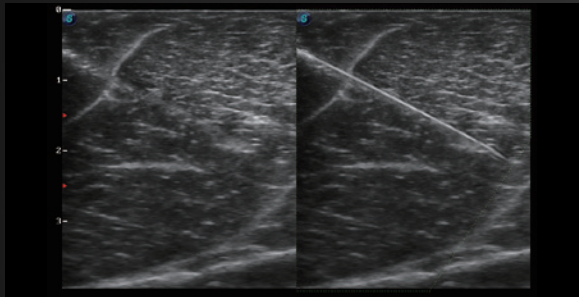
High-definition intrarectal linear transducer for equine reproduction. Features easy-to-clean design, 3-meter cable, and wide-field high-resolution imaging, ideal for IVF.



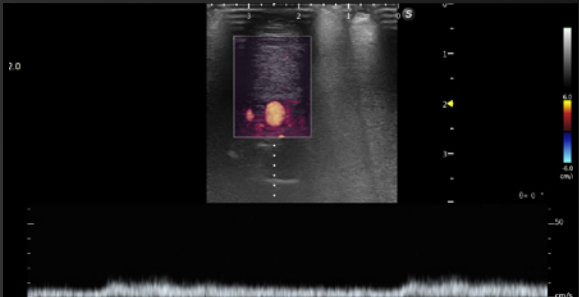
PIONEERING SOLUTIONS FOR EQUINE CARE



Panoramic
Real-time 2D and Color/Power Doppler Panoramic Imaging enables to extend the field of view and any mistakes can also be easily back tracked and corrected without interrupting the scan.



Vis-Needle
Designed for equine practitioners, this tool simplifies operations like injection, aspiration, and biopsy, providing precise needle visualization within the anatomy without distortion.



FHR
Enhanced sensitivity and superior resolution provide accurate low-velocity blood flow visualization for realistic hemodynamic assessments.



SonoAssistant
Streamlined and standardized workflows tailored for equine applications. Customizable scanning templates enhance efficiency and consistency.



Sono Transfer
SonoTransfer enables direct PC transmission of PDF reports, images, and cine loops to a shared Windows folder, ensuring faster and more convenient transfers.



MOBILITY MEETS STABILITY

High-Capacity Mobile Battery

Probe Protective Cover

Sleek Power Redefined

Silicone Panel Film

Main Unit Dust Cover

Mobile Trolley Case

Waterproof Touchpad

Enhanced Portability and Maneuverability