



DEKS Solar Solutions

Speciality flashing Solutions for Solar Pipes and Cables

Don't waste time or risk call-backs by filling holes with silicone (which breaks down quickly with exposure to UV)

The Deks range of Solar Flashings are purpose made durable solutions as required by MCS and the professional choice for flashing pipes and cables on tile, slate or metal roofs.

-  Solutions for all types of roof
-  Durable flashing solutions as required by MCS
-  High UV Resistance
-  Fixing is fast and easy
-  20 year warranty



Solar Flashings for tile and slate roofs

Solardek™

The speciality Flashing for Solar Thermal installations

The purpose designed SolarDek™ provides the safest, most efficient method of flashing solar thermal pipes and cables on tile and slate roofs.

SolarDek™ features the Nu-Lead® base which will not stain or corrode the roof, together with long-life Dektite® EPDM or grey silicone cone ideally suited to solar thermal pipe sizes.



Solardek™

- New grey high temperature seal
- Complete weather proofing for all solar thermal pipes and cables
- Safe protected Nu-Lead® apron
- Also available in black EPDM and Aluminium base

Pipe External	Roof Pitch	Base Size	Base Type	Code
				Black EPDM
0 - 35mm	0-45°	490 x 410mm	Nu-Lead	DNL100B
0 - 35mm	0-45°	450 x 600mm	Aluminium	SDA MINI

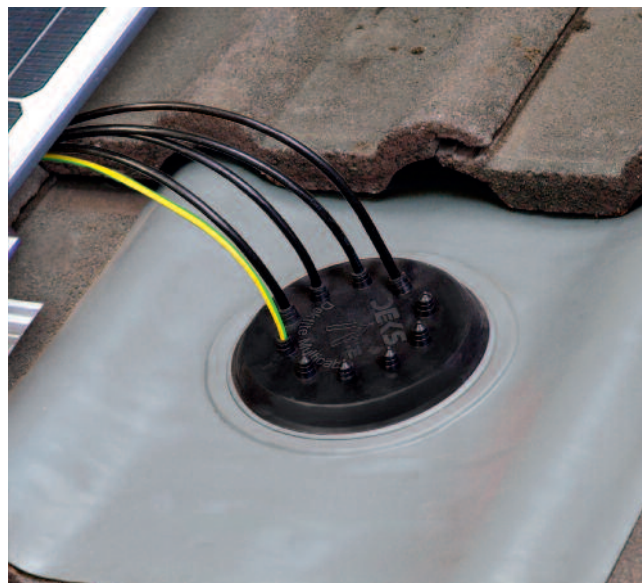
Pipe External	Roof Pitch	Base Size	Base Type	Code
				Grey Silicone
0 - 35mm	0-45°	490 x 410mm	Nu-Lead	DNLS200G

Grey silicone resists temperatures to 200°C constant and 250°C intermittently

Dektite® Multicable Solar Flashing

The speciality flashing for solar PV cables on tile or slate roofs

Allows up to 10 cables to be taken effectively through any tile or slate roof - Avoids risk of damage or pressure on cables by isolating from tiles or slates and provides a complete weatherproof seal. Black EPDM cone, features Nu-Lead® acrylic coated lead base.



Dektite® Multicable

- Black EPDM High UV resistant cone
- Available with Aluminium or Nu-Lead® base
- Weather seals and protects up to 10 cables
- Purpose made durable solution as required by MCS

Cable External	Roof Pitch	Base Size	Base Type	Code
				Black EPDM
4 - 8mm	Any	490 x 410mm	Nu-Lead	DNLS10MB
4 - 8mm	Any	450 x 600mm	Aluminium	SDA 10MB



Solar Flashings for metal roofs

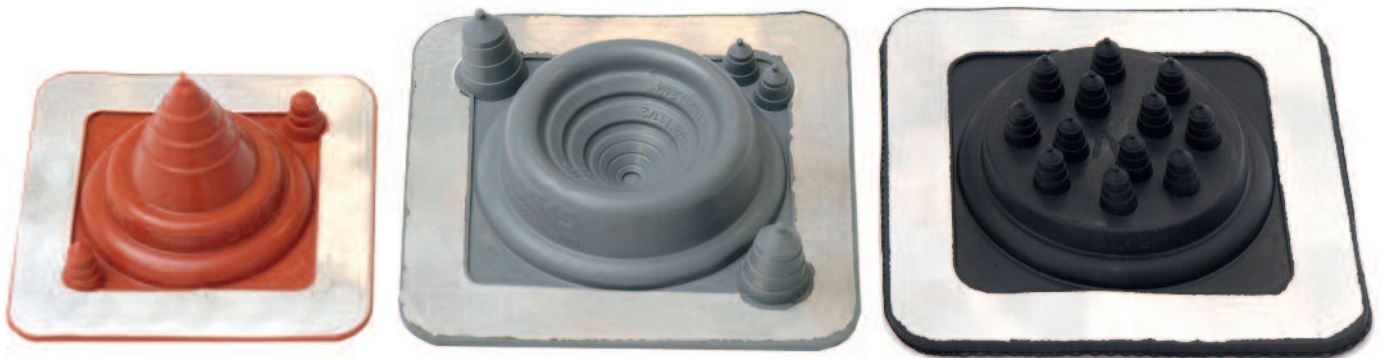
Dektite® Premium

Perfect for Flashing Pipes and Cables on Metal Roofs

The multi-application flashing in a highly durable EPDM or silicone, edged with a flexible aluminium band, flashes pipes and cables on metal roofs. The square base fits most roof profiles.



See back page for details of Dektite® fixing kits



Dektite® Premium DFE 100/200

- ✓ For solar pipe or up to 3 cables
- ✓ Suits most roof profiles
- ✓ Available in black and grey EPDM or red silicone

Dektite® Premium DFE 101/201

- ✓ Versatile flashing, accommodates up to 5 penetrations
- ✓ Suitable for pipes and/or cables
- ✓ High UV resistance

Dektite® Premium Multicable DFE 101BM

- ✓ Protects up to 12 cables and weatherproofs entry to any metal roof
- ✓ Purpose made durable solution as required by MCS
- ✓ Suits most roof profiles

Pipe External	Cable External	Roof Pitch	Code Base Size	Code Red Silicone	Code Grey EPDM	Code Black EPDM
0-35mm	4-8mm	0-45°	100 x 100mm	DFE200RES	DFE100GS	DFE100BS
5-55mm	4-8mm	0-45°	139 x 139mm	DFE201RES	DFE101GS	DFE101BS
N/A	4-8mm	Any	139 x 139mm	N/A	N/A	DFE101BM

Installation Instructions for Solar Flashings

For Tile and Slate roofs

Fit the acrylic lead or Aluminium apron in the same way as a conventional lead weathering slate. The area where the tiles or slates have been cut or moved should be completely covered. It will normally be inserted under the tiles or slates above the penetration and dressed over the adjoining tiles or slates as shown right.

Cables should be passed through the flashing as follows:

1. Check exact outside diameter of the cables.
2. Cut the nipples as indicated for 4-6mm or 6-8mm cables. Use tin snips or scissors ensuring that the cut is straight and parallel to give a tight fit to the cable. **DO NOT** pierce the cable nipple with a craft knife or other pointed implement.
3. Pass cables through using water as a lubricant if needed.



Pipes should be passed through the flashing as follows:

1. Cut the cone with tin snips or scissors where indicated for the relevant pipe size.
2. Pipes should be passed through the flashing using water as a lubricant.
3. Remove any insulation from pipe before fitting.

For Metal roofs

1. Cut the Dektite® cone and/or cable nipple to the relevant size and pass cable and/or pipes through using water as a lubricant.
2. Apply neutral cure silicone sealant on the underside of the flange.
3. Press flashing into the contours of the roof panel.
4. Fasten flashing to surface with self drilling screws.



Dektite® fixing kits

Dektite fixing kits are designed for use with Deks EPDM and Silicone flashings on metal roofs. The DFK1 kit (As shown) contains 1 x 75ml tube of low modulus Silicone, 25 x self-drilling screws, 25 x colour caps (silver) 1 x fixing instruction leaflet.

The DFK2 kit contains 3 x 75ml tube of low modulus silicone, 75 x self-drilling screws, 75 x colour caps (silver) and 1 x fixing instruction leaflet.

On the back page of the instruction leaflet is a table which indicates which kit is required for each size of flashing.

May 2014 S-SOL - NP
UK

Photographs are for illustration purposes only